

Storage

- ◆ Composite Decking products should be kept in their original packaging and stored indoors until ready to be installed. If stored outdoors, a suitable non-translucent cover should be used.
- ◆ All Composite Decking products should be stored flat, level and raised above the ground with support at 500mm intervals.
- ◆ Battens used to separate and support stored Composite Decking product should be spaced at 500mm or less to prevent bowing of boards.
- ◆ Pallets of Composite Decking boards should not be stacked more than 4 pallets, or 3 metres, high.

Handling

- ◆ When unloading Composite Decking products, they should be placed, not dumped, to prevent damage.
- ◆ Do not slide Composite Decking boards against each other when removing from packaging or when moving them.
- ◆ Do not slide or drag any objects or equipment across the boards during installation.
- ◆ To prevent damage, the surface of the Composite Decking boards should be kept free of building materials and waste during installation.
- ◆ Ensure Composite Decking boards are handled safely. Boards should be carried on their edge for better support. We recommend that 2 people handle a full length board.

Components & Accessories

In addition to Composite Decking boards, the following components complete the system.



Stainless Steel Fixing Clips and Starter Clips



Stainless Steel Decking Screws



Colour-coded Edging Trims



Composite Keel System

Tools & Equipment

Standard woodworking tools can be used when installing Composite Decking.

- ◆ A circular saw with thin kerf 40 tooth alternate top finish blade provides the cleanest cuts.
- ◆ A power mitre saw is suitable for bevelled edges.
- ◆ Jig saw.
- ◆ Hand drill - 3mm and countersink drill bits.
- ◆ Impact driver.
- ◆ Tape measure.
- ◆ Carpenters square.
- ◆ Spirit level.
- ◆ Safety glasses and other relevant Personal Protective Equipment.
- ◆ Chalk line.

Colour Variations

Due to sun bleaching, composite products are subject to fade following installation. As Composite Decking is man-made and a recycled product, expect slight colour variation after the initial installation. This initial lightening of the product normally weathers over the first 8-10 weeks following installation. Our warranty does not cover colour fade, water marks or discolouration or stains on our products. As Composite Decking is produced from different batches, slight colour variations can occur.

Roofing & Cladding Solutions

- ◆ Guardian Roof Slate
- ◆ Guardian Roof Shingle
- ◆ Fascia & Soffit
- ◆ Exterior Cladding
- ◆ Gutters & Downpipes
- ◆ Gutter Brush

Window Solutions

- ◆ Window Boards & Trims

Interior Solutions

- ◆ Decorative Wall & Ceiling Cladding
- ◆ Accessories & Trims

Flooring Solutions

- ◆ CleverClick Luxury Vinyl Flooring
- ◆ Tiles & Timber
- ◆ Accessories & Trims
- ◆ RubberLok Utility Mats

Landscape Solutions

- ◆ Composite Decking & Railing
- ◆ RubberLok Safety Tiles
- ◆ SafetyGrass Rubber Matting
- ◆ RubberLok Utility Mats

Ticks all the boxes ✓

DISCLAIMER

Information given in this guide is based on guidelines for installation in a domestic setting. Commercial decks require a more robust design, materials and construction to deal with loads placed on them. This is just a general guide and may not cover every installation. It is the responsibility of the customer for the installation methods used and its performance as every deck installation is different and will be unique to the site. Please satisfy yourself that Composite Deck installation and design is reviewed by a qualified person before installation commences. Only ever use suitably qualified personnel when installing Composite Deck.

If your design includes a ramp it is the customer's responsibility to ensure that this is installed correctly. Guardian can provide a test report for slip resistance as an added safety measure. Guardian recommend the fitting of grit strips, always lay the board at right angles to the direction of travel.

A sample product should be checked before installation as errors will not be considered once a project has commenced.

Composite Deck is a man-made, composite product and, following installation, will be subject to colour fading due to exposure to the sun. Initial lightening of the product normally weathers over the first 8-10 weeks. Our warranty does not cover colour fade, water marks, discolouration or staining. Slight colour variations can occur between batches.

Whilst care has been taken to reproduce Composite Deck colours in this brochure, due to limitations in the printing process, the samples shown may not exactly match actual product. We recommend viewing actual product samples prior to purchase.

*While Composite Deck is naturally slip resistant we recommend caution when the deck becomes wet or during periods of frost or ice.

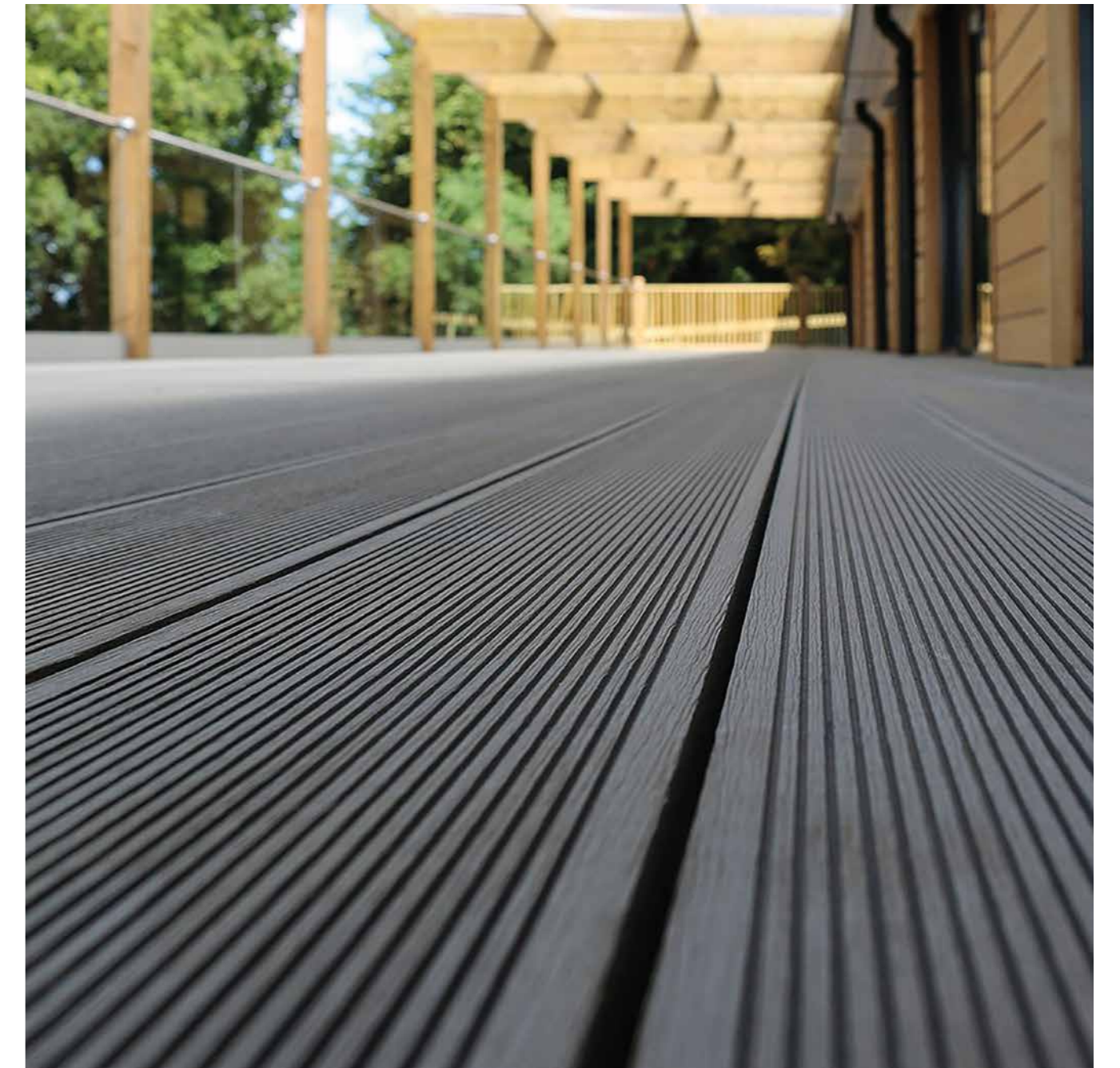
Guardian Building Products

Tel: 01332 296844 Email: info@guardianbp.co.uk

www.guardianbp.co.uk

Whilst Guardian has made every attempt to ensure that this information is accurate and reliable at the time of its publication, we cannot accept responsibility for any errors, omissions, inaccuracies or any changes that have occurred since the date of publication or for the results obtained from the use of such information.

September 2022



Composite Decking

Installation Guide

Ticks all the boxes ✓

Composite Decking Installation Guide



Congratulations on your purchase of Guardian Composite Decking. To aid installation and ensure that your Composite Decking stays looking its best, we recommend that you follow these easy guidelines.

Composite Decking is quick and easy to install and features a double-sided profile offering a choice of two distinct finishes which can also be 'mix and matched' or reversed after a period of time.

Slip resistant* and splinter-free, Composite Decking is very low maintenance with no requirement for annual treatment or oiling to keep that just installed look.

Extend the Life of your Composite Decking

To get the most from your Guardian Composite Decking, follow these simple maintenance guidelines.

For general cleaning maintenance, use a soft bristle brush and a dilution of mild soap and warm water.

When using a power washer (maximum power 1500 psi) we recommend that you stand at least 1 metre away from the area you are cleaning. Always spray in the direction of the grain to avoid damaging the product. Follow manufacturers safety instructions when operating a power washer. Make sure that water effectively drains from your Composite Decking.

For more difficult to clean areas, or where the decking surface may have been damaged by the dropping of sharp objects etc., we recommend lightly sanding the decking in the same direction of the grain. Then rinse thoroughly with water. The treated area will take 8-10 weeks to naturally weather back.



Scuff and Stain Resistant



Water resistant



Natural look and feel



Quick and easy click installation



Easy to clean and maintain



Eco-friendly product

Before you start

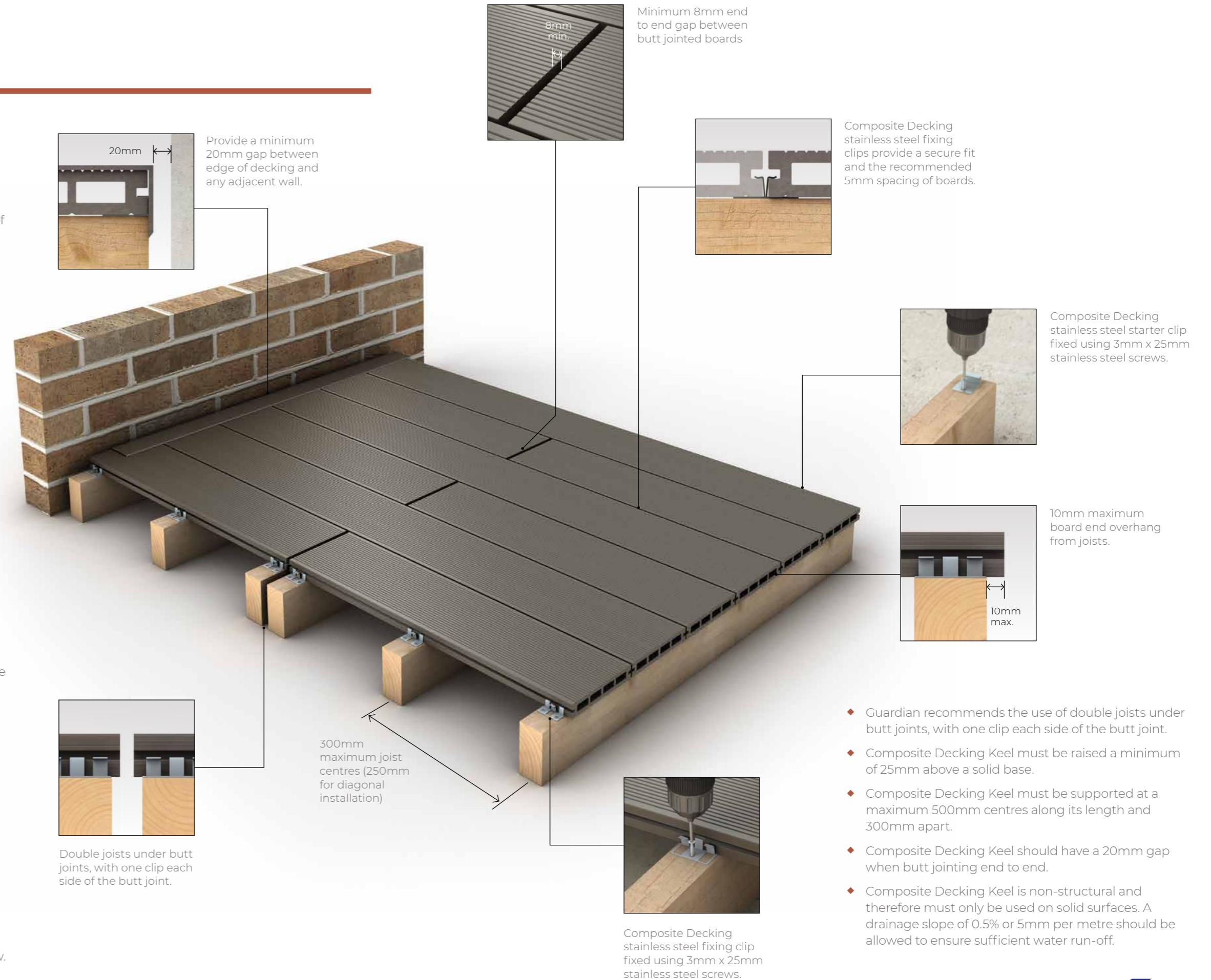
- Composite Decking boards must have a minimum gap of 5mm between each board, and must be fitted using Composite Decking stainless steel fixing clips and stainless steel screws. A minimum of 12 clips per 3.6m length is recommended.
- Composite Decking stainless steel starter clips are recommended for securing the first line of decking boards with a minimum of 12 clips per 3.6m length.

Preparing the area

- Guardian recommends that installation conditions are stable and flat to avoid the possibility of the decking surface deforming.
- Joists must be laid on a solid flat surface such as concrete. Grass, uneven paving slabs or sand will cause movement and damage the installation.
- Guardian recommends that you do not fix joists directly to foundations and that joist centres are no greater than 300mm, except when fitting Composite Decking boards on the diagonal where we recommend that joist centres are 250mm and you work from the centre out.
- Guardian recommends that a drainage channel be included in the foundations.

Installation

- A drainage slope along the length of the board of 0.5% or 5mm per meter should be allowed to ensure sufficient water run-off.
- Composite Decking boards, when butt jointed, should have a minimum 8mm end to end gap and be supported by additional joists.
- When butt joint to walls or other fixed objects the minimum gap required is 20mm.
- Composite Decking boards should be a minimum of 50mm off the ground.
- Composite Decking boards need to be supported along their length. The ends of boards must be supported and not have an overhang of more than 10mm.
- When using pressure treated timber, Guardian recommends that these are a minimum of 90mm off the ground to allow air ventilation and water flow.



Composite Decking stainless steel fixing clips provide a secure fit and the recommended 5mm spacing of boards.

Composite Decking stainless steel starter clip fixed using 3mm x 25mm stainless steel screws.

10mm maximum board end overhang from joists.

Guardian recommends the use of double joists under butt joints, with one clip each side of the butt joint.

Composite Decking Keel must be raised a minimum of 25mm above a solid base.

Composite Decking Keel must be supported at a maximum 500mm centres along its length and 300mm apart.

Composite Decking Keel should have a 20mm gap when butt jointing end to end.

Composite Decking Keel is non-structural and therefore must only be used on solid surfaces. A drainage slope of 0.5% or 5mm per metre should be allowed to ensure sufficient water run-off.

Composite Decking stainless steel fixing clip fixed using 3mm x 25mm stainless steel screws.